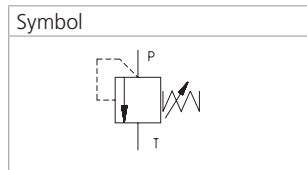
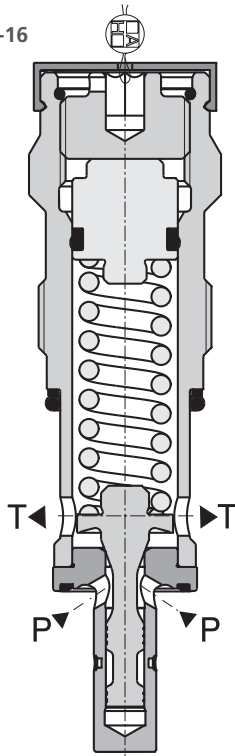


VPP-R-16



Technical Features

- › Pressure relief valve, direct-acting, intended for installation in a manifold
- › Wide pressure range up to 350 bar
- › Large flow range
- › Low hysteresis, accurate pressure control and low pressure drop
- › Hardened precision parts
- › Leak-free closing, suitable for fast cycling with long life
- › Adjustment option with sealable allen head and a protective cap
- › In the standard version, the valve is zinc coated for 240 h (for size 25) and 520 h (for size 16) protection acc. to ISO 9227

Functional Description

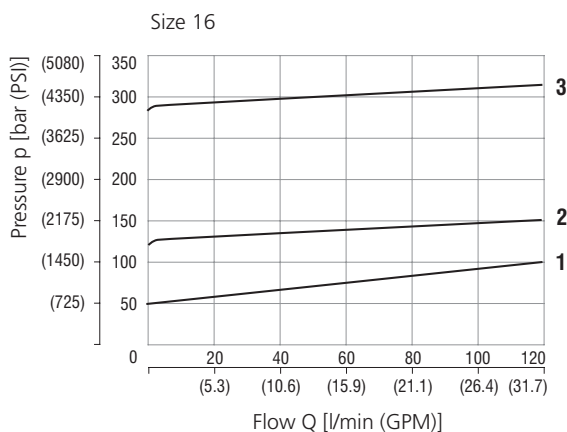
A poppet type, direct acting hydraulic relief valve in the form of a screw-in cartridge intended for use as a pressure limiting device for common hydraulic circuit protection. The spring acts on the poppet and presses it onto the valve seat. If the hydraulic pressure is below the pre-set value, the valve is closed. If the hydraulic force exceeds the pre-set value the valve opens and flow passes to the tank port until the system pressure falls below the spring pre-set value and the valve closes again.

Technical Data

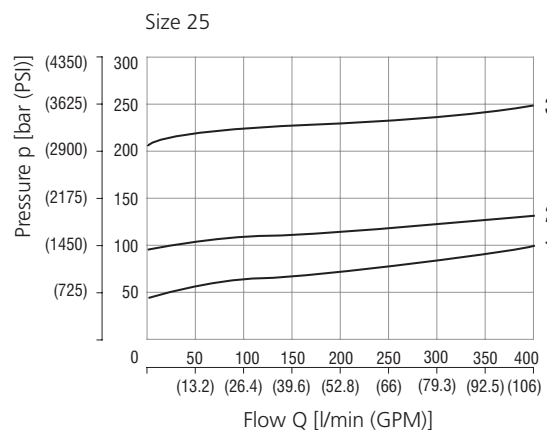
| Valve size | | Size 16 | Size 25 |
|-------------------------------|--------------------------|-----------------------------------|-------------|
| Connection thread | | M36x2 | M42x2 |
| Max. flow | l/min (GPM) | 120 (31.7) | 400 (106) |
| Max. inlet pressure (port P) | bar (PSI) | 350 (5080) | |
| Max. outlet pressure (port T) | bar (PSI) | 160 (2320) | |
| Fluid temperature range (NBR) | °C (°F) | -30 ... +100 (-22 ... 212) | |
| Fluid temperature range (FPM) | °C (°F) | -20 ... +120 (-4 ... 248) | |
| Kinematic viscosity range | mm ² /s (SUS) | 10 ... 500 (49 ... 2450) | |
| Weight | valve | 0.56 (1.23) | 1.03 (2.27) |
| | valve with body | 3.06 (6.75) | 5.5 (12.1) |
| | | Datasheet | Type |
| General information | GI_0060 | Products and operating conditions | |
| Spare parts | SP_8010 | | |

Characteristics measured at v = 32 mm²/s (156 SUS)

Relief pressure related to flow rate



| | Pressure stage | Pressure range bar (PSI) |
|---|----------------|-----------------------------|
| 3 | 28 | 280 - 350 (4060 - 5080 PSI) |
| 2 | 13 | 130 - 280 (1890 - 4060 PSI) |
| 1 | 5 | 50 - 130 (730 - 1890 PSI) |



| | Pressure stage | Pressure range bar (PSI) |
|---|----------------|-----------------------------|
| 3 | 20 | 200 - 350 (2900 - 5080 PSI) |
| 2 | 10 | 100 - 200 (1450 - 2900 PSI) |
| 1 | 5 | 50 - 100 (730 - 1450 PSI) |

