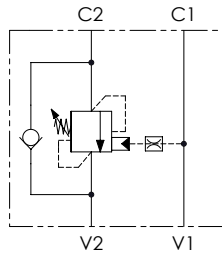




SCHEMA IDRAULICO / HYDRAULIC CIRCUIT

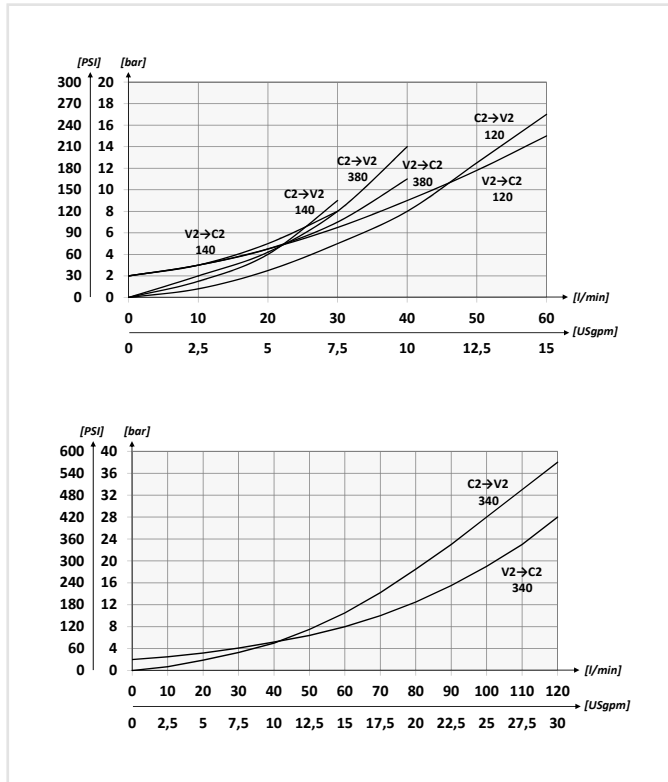


CODICE ORDINAZIONE
ORDERING CODE

01	02	03	04	05
VBCL				

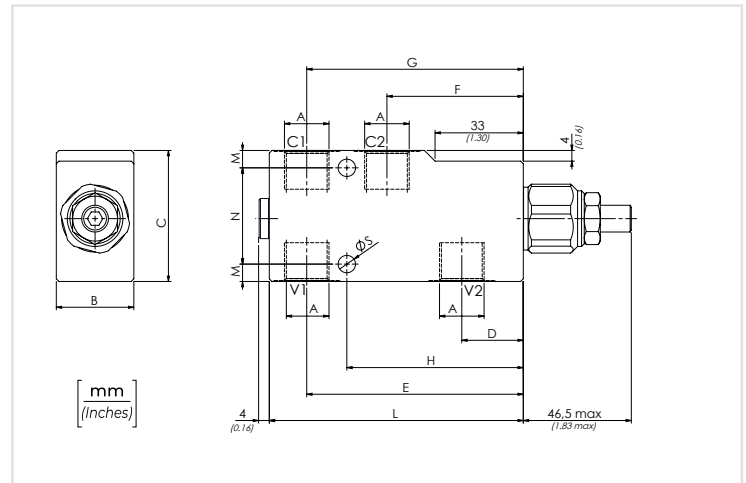
01	VALVOLE DI BILANCIAMENTO SINGOLE PER CENTRO APERTO (SINGLE COUNTERBALANCE VALVES FOR OPEN CENTER)				VBCL	
02	DIMENSIONE (SIZE)			BSPB 1/4	140	
				BSPB 3/8	380	
				BSPB 1/2	120	
				BSPB 3/4	340	
03	MOLLA (SPRING)	Rp 1:4.25	140 380 120	78 bar/al giro (1131 PSI/turn)	Taratura standard (Std. setting)	1
				160 bar/al giro (2320 PSI/turn)	Q=5 l/min 200 bar (2900 PSI)	
	MOLLA (SPRING)	Rp 1:4.25	120	135 bar/al giro (1958 PSI/turn)	Taratura standard (Std. setting)	2
				160 bar/al giro (2320 PSI/turn)	Q=5 l/min 350 bar (5075 PSI)	
	MOLLA (SPRING)	Rp 1:6.2	340	143 bar/al giro (2074 PSI/turn)	Taratura standard (Std. setting)	2
				242 bar/al giro (3509 PSI/turn)	Q=5 l/min 350 bar (5075 PSI)	
	MOLLA (SPRING)	Rp 1:10.6	340	143 bar/al giro (2074 PSI/turn)	Taratura standard (Std. setting)	2
				242 bar/al giro (3509 PSI/turn)	Q=5 l/min 350 bar (5075 PSI)	
04	MATERIALE (MATERIAL)	Acciaio + zincatura (Steel body + zinc-plating)			S	
		Acciaio + zinco-nichel (Steel body + zinc-nickel)			K	
05	RAPPORTO DI PILOTAGGIO (PILOT RATIO)	140	1:4.25 Standard		/	
		380	1:8.75		8	
		120	1:6.2		/	
		340	1:10,6		11	

PERFORMANCES



DATI TECNICI / TECHNICAL DATA

Olio idraulico - Mineral oil	ISO 6743/4 (DIN 51524)
Viscosità olio - Oil viscosity	15-250 mm²/s (15 to 250 cSt)
Classe di contaminazione max con filtro Max contamination index with filter	ISO 4406:1999 Classe 19/17/14
Temperatura dell'olio - Oil temperature	-20°C +80°C -4°F + 176°F
Temperatura ambiente - Environment temperature	-20°C +50°C -4°F + 122°F
È indispensabile l'utilizzo di un filtro per proteggere la valvola (filtrazione consigliata 15 µm) It is necessary a filter use to protect the valve (advised filtration 15 µm)	



CARATTERISTICHE TECNICHE / TECHNICAL CHARACTERISTICS

TIPO TYPE	A	PORTATA MAX MAX FLOW l/min-USgpm	PRESSIONE MAX MAX PRESSURE bar-PSI	B	C	D	E	F	G	H	L	M	N	S	PESO APPROX (kg) APPROX WEIGHT (lb)		
VBCL140	BSPB 1/4	30 (7.9)	350 (5075)	29 (1.14)	49 (1.93)	23 (0.91)	81 (3.19)	51 (2.01)	81 (3.19)	66 (2.60)	95 (3.74)	6,5 (0.26)	36 (1.42)	6,5 (0.26)	0,98 (2.16)		
VBCL380	BSPB 3/8	40 (10.6)			59 (2.32)	21 (0.83)	84 (3.30)		84 (3.31)	67,5 (2.66)	100 (3.94)	9,5 (0.37)	40 (1.57)		0,92 (2.02)		
VBCL120	BSPB 1/2	60 (15.9)			39 (1.54)	69 (2.72)	20 (0.79)		120 (4.72)	72 (2.83)	120 (4.72)	96 (3.78)	140 (5.51)		50 (1.97)	10,5 (0.41)	1,09 (2.40)
VBCL340	BSPB 3/4	120 (31.7)			39 (1.54)	69 (2.72)	20 (0.79)		120 (4.72)	72 (2.83)	120 (4.72)	96 (3.78)	140 (5.51)		50 (1.97)	10,5 (0.41)	2,54 (5.59)